



2019 Conference Participant Directory

PCP

PROFESSIONALS in
CHRISTIAN
PHILANTHROPY

CONFIDENTIAL: NOT FOR DISTRIBUTION

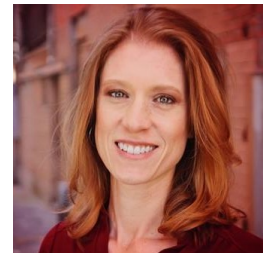
Professionals in Christian Philanthropy (PCP) is a peer learning community of professionals striving to sharpen and encourage one another toward excellence in faith-inspired grantmaking.

2019 Conference Participants:

** asterisks denote members of the PCP Steering Committee*

Birga Alden

Community Engagement Specialist at Tijeras Foundation
1311 Tijeras Ave. NW
Albuquerque, NM 87102 US
alden@tijeras.org (505) 450-7931



Julie Aleman

Executive Director at Younger Family Fund
755 Page Mill Rd., Bldg A 200
Palo Alto, CA 94304 US
julie@yofo.org (415) 894-9385



Lee Behar

Finance & Strategy Director at The Maclellan Foundation
820 Broad Street, Suite 300
Chattanooga, TN 37402 US
lee@maclellan.net (423) 991-3801



Petr Cabak

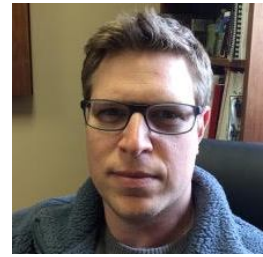
Executive Director at F-nadace Foundation
Krasova 24, 130 00 Praha 3
BIN CZ: 604 49 837 CZECHIA
petr.cabak@f-nadace.cz +420 774-077-753



Matt Castagna

Program Officer at R.B. Nordick Foundation
850 11th Ave. NE
West Fargo, ND 58078 US
matt@rbnf.org

(701) 356-3252



Ari Clowney

Program Officer at Cornerstone Trust
River Front Plaze Building, 55 Campau NW
Grand Rapids, MI 49503 US
ariclowney@gmail.com

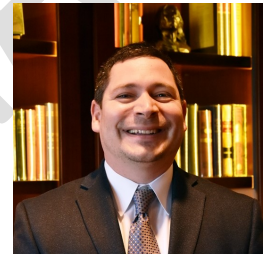
(616) 406-5494



Adrian Cook

Director of Research and Evaluations at Rees-Jones Foundation
8111 Westchester Drive, Suite 950
Dallas, TX 75225 US
acook@rees-jonesfoundation.org

(214) 884-3308



Genevieve Couch

Trustee at The Jesus Fund
125 Navajo Trail
Maumelle, AR 72113 US
genny_couch@yahoo.com

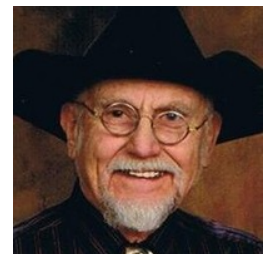
(501) 813-9844



Gene Davis

President at Foreign Mission Foundation
10875 SW 89th Ave
Tigard, OR 97223 US
fmf.india@yahoo.com

(503) 246-5862



Brian Decker

Executive Director at Madala
10109 S. Shadow Hill Dr
Lone Tree, CO 80124 US
bhdecker@gmail.com

(303) 993-4720



Lori Drexler

Program Officer at Crowell Trust
102 N Cascade Ave, Suite 300
Colorado Springs, CO 80903 US
ldrexler@crowelltrust.org

(618) 645-8119



Jenifer Duncan

Grants Relationship Manager at Jackson Family Foundation
2575 Northwinds Parkway
Alpharetta, GA 30009 US
jduncan@jacksonhealthcare.com

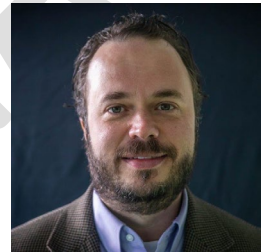
(678) 575-0575



Jason Ferenczi

Program Director at Cornerstone Trust
55 Campau Ave. NW, Suite 501
Grand Rapids, MI 49503 US
jason@cornerstonetrust.org

(616) 363-9209



Pauline Fong

Program Director at MJ Murdock Charitable Trust
703 Broadway, Suite 710
Vancouver, WA 98660 US
paulinef@murdocktrust.org

(360) 694-84155



David Forshee

Program Officer at Cornerstone Trust
55 Campau Ave. NW, Suite 501
Grand Rapids, MI 49503 US
david@cornerstonetrust.org

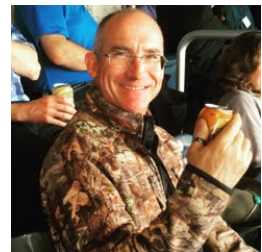
(616) 363-9209



Matt Fries

Director at EF07 LLC
4207 Croxdale Street
Springdale, AR 72764 US
mfries@securenym.net

(479) 409-9769



Tyler Haar

Project Manager at The Maclellan Foundation
820 Broad Street, Suite 300
Chattanooga, TN 37402 US
tyler@maclellan.net

(423) 648-5871



Kelsie Hamilton

Program Associate at First Fruit, Inc.
14 Corporate Plaza, Suite 200
Newport Beach, CA 92660 US
kelsie@firstfruit.org

(949) 633-8971



Craig Hammon

Trustee at Westwood Endowment
6 Maple Street
Essex, MA 01929 US
hammoncraig@gmail.com

(978) 764-8890



Neil Hart

Executive Head at Mergon Foundation
PO Box 486, Stellenbosch
Western Cape, 7599 SOUTH AFRICA
neil@mergon.co.za

+27 21 816 1120



Kerima Haynes

Executive Director at the Neighbor Company
1380 West Paces Ferry Rd., Suite 1210
Atlanta, GA 30327 US
kerima.haynes@herschendfamily.com

(678) 466-7359



Kelsey Malnati Howell

Executive Director at the Marc and Jeanne Malnati Family Foundation
PO Box 6749
River Forest, IL 60305 US
kelseyhowell@gmail.com

(847) 682-9156



Chad Jackson

Director of Philanthropy at Jackson Family Foundation
2575 Northwinds Parkway
Alpharetta, GA 30009 US
chad@jacksonhealthcare.com

(678) 992-1259



Lonni Jackson *

Executive Director at Mustard Seed Foundation
7115 Leesburg Pike, Suite 304
Falls Church, VA 22043 US
ljackson@msfdn.org

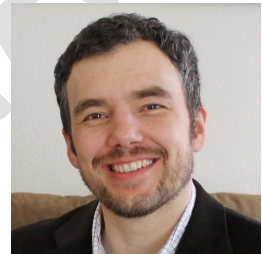
(703) 524-5620



Michael Jackson

Vice President at Foreign Mission Foundation
10875 SW 89th Ave
Tigard, OR 97223 US
fmf.michael@yahoo.com

(503) 515-8334



Randall Kennedy

Strategy Director at The Maclellan Foundation
820 Broad Street, Suite 300
Chattanooga, TN 37402 US
randy@maclellan.net

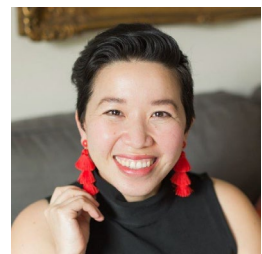
(423) 648-5877



Manivanh Khy *

Chief of Staff at First Fruit, Inc.
14 Corporate Plaza Dr., Suite 200
Newport Beach, CA 92660 US
manivanh@firstfruit.org

(949) 759-5845



Jena Kitchen

Associate at DeBoer Foundation, Inc.
7204 Glen Forest Drive, #104
Richmond, VA 23226 US
jkitchen@deboerfoundation.org

(804) 517-2621



Evie Kling

International Fellow at David Weekley Family Foundation
1023 Springdale Road, Building 1 Suite J
Austin, TX 78721 US
evie@dwf.foundation

(804) 814-0730



Fritz Kling *

President at DeBoer Foundation, Inc.
7204 Glen Forest Drive, Suite 104
Richmond, VA 23229 US
fkling@deboerfoundation.org

(804) 714-4066



Marnus Klopper

Regional Manager at Mergon Foundation
PO Box 486 Stellenbosch
Western Cape 7599 SOUTH AFRICA
marnus@mergon.co.za

+27 21 816 1111



Stephen Komanapalli

Director at Sacred Harvest Foundation
650 Town Center, Suite 810
Costa Mesa, CA 92626 US
stevek@sacredharvest.org

(714) 617-4689



Josh Kwan

President at The Gathering
15 N Ellsworth Ave, Suite 220
San Mateo, CA 94401 US
josh@thegathering.com

(650) 810-5182



Randall Leonard

Director at The Haglage Charitable Trust
5442 West 100th Terr
Overland Park, KS 66207 US
rleonard@colonialkc.org

(816) 501-3040



Chelsea Lernihan

International Grants Manager at MIGMIR Fund
1009 Manassas Drive
Westfield, IN 46074 US
chelsea.lernihan@migmir.org

(812) 455-2863



Steven Mayer *

Program Director at Cornerstone Trust
55 Campau Ave NW Suite 501
Grand Rapids, MI 49503 US
steve@cornerstonetrust.org

(616) 363-9209



Adam McClun

Program Officer at Harry J Lloyd Charitable Trust
7200 West 132nd Street, Suite 190
Overland Park, KS 66213 US
adammcclun@ltrust.org

(913) 851-2174



Nadine McIntosh *

Vice President at Tijeras Foundation / Johns Family Foundation
1311 Tijeras Ave NE
Albuquerque, NM 87122 US
nmcintosh@tijeras.org

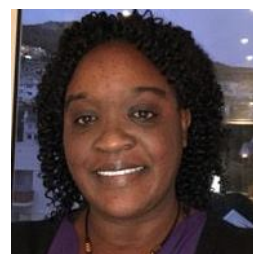
(505) 314-3442



Margaret McKenzie

Program Officer at Cornerstone Trust
55 Campau Aven. NW, Suite 501
Grand Rapids, MI 49503 US
margaret@cornerstonetrust.org

(616) 734-3131



Chris Munson

Senior Program Officer at the Rees-Jones Foundation
8111 Westchester Drive, Suite 950
Dallas, TX 75225 US
cmunson@rees-jonesfoundation.org

(214) 884-3307



Brett Nordick

Executive Director at the R.B. Nordick Foundation
850 11th Avenue NE
West Fargo, ND 58078 US
brett@rbnf.org

(701) 356-3252



Bill Nyman

Vice President at Harry J. Lloyd Charitable Trust
7200 W. 132nd Street, Suite 190
Overland Park, KS 66213 US
billnyman@ltrust.org

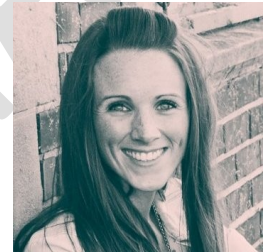
(913) 851-2174



Erin O'Keefe

Executive Director at MIGMIR Fund
1523 Alan Rd
Naperville, IL 60564 US
erin.okeefe@migmir.org

(224) 622-0864



Jennifer Oakley

Program Partner at Imago Dei Fund
P.O. Box 170025
Boston, MA 02117 US
jennifer@imagodeifund.org

(617) 501-6932



Matthew Owen

Managing Director at Protein Foundation
10 Moulton Street, Suite 5
Portland, ME 04101 US
matt.proteinfoundation@gmail.com

(207) 844-0798



Sandy Parr

Senior Associate at DeBoer Foundation, Inc.
2121 N. Webb Road
Wichita, KS 67206 US
sparr@deboerfoundation.org

(316) 631-1337



Alex Radler

Director at Radler Foundation/4Africa
1320 S University Dr, STE 500
Fort Worth, TX 76107 US
aradler@radlerfoundation.org

(407) 913-5440



Peter Roebbelen

President at The Charis Foundation
4-1400 Cornwall Road
Oakville, ON L6J7W5 CANADA
peter@charisfoundation.ca

(905) 849-8552



Danny Rohrdanz

Platform Engagement at Clearwell Group / Free Family Foundation
610 W De Leon St
Tampa, FL 33606 US
danny@clearwellgroup.com

(813) 774-0160



Steve Singleton

President at Charis Foundation
3835 Cleghorn Avenue, Suite 300
Nashville, TN 37215 US
sds@charisfound.org

(615) 843-9102



Ivan Skalka

Executive Director at Strategic Donor Foundation
Pod Babykou 281
75501 Vsetin CZECHIA
ivanskalka55@gmail.com

+420-602-514-676



Candy Sparks

Executive Director at Crowell Trust
102 N Cascade Ave, Suite 300
Colorado Springs, CO 80903 US
csparks@crowelltrust.org

(719) 645-8119



Steve Steddom

Executive Director at Harry J. Lloyd Charitable Trust
7200 W 132nd St, Ste 190
Overland Park, KS 66213 US
stevesteddom@ltrust.org

(913) 851-2174



Terese Stevenson *

VP Grants at The Rees-Jones Foundation
8111 Westchester, Suite 950
Dallas, TX 75225 US
tstevenson@rees-jonesfoundation.org

(214) 884-3303



Julie Sulc *

Senior Program Officer at The Pew Charitable Trusts
2005 Market Street, Suite 2800
Philadelphia, PA 19103 US
jsulc@pewtrusts.org

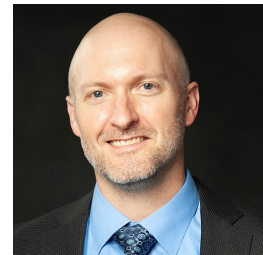
(215) 575-4855



Jeremy Taylor

President at Tyndale House Foundation
351 Executive Dr
Carol Stream, IL 60188 US
jeremytaylor@tyndale.com

(630) 784-5338



John Terrill

Executive Director at Stephen & Laurel Brown Foundation
365 East Campus Mall, Suite 200
Madison, WI 53715 US
jterrill@slbrownfoundation.org

(608) 237-2929



Philip Tisdale

Executive Director at The SOMA Foundation
PO Box 5346
Columbus, GA 31906 US
pdtisdale@somafoundation.net

(706) 221-7262



Daneli Urena

Program Officer at Cornerstone Trust
55 Campau Ave. NW, Suite 501
Grand Rapids, MI 49503 US
daneli@cornerstonetrust.org

(954) 649-9719



Marcus Witzke

CEO at Hopebearer Foundation
Heinrich-Längerer-Str., 27
Leonberg, Deutschland 71229 GERMANY
m.witzke12@googlemail.com

+49 7152 56983-10



Mary Kleine Yehling

VP, Executive Director at Tyndale House Foundation
351 Executive Dr
Carol Stream, IL 60188 US
MaryKleineYehling@TyndaleHouseFdn.org

(630) 930-4150

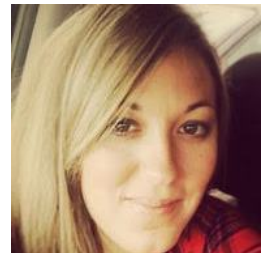


PCP Staff:

Karen Perlman

PCP Event Coordinator
Communications and Projects Assistant at Tyndale House Foundation
351 Executive Dr
Carol Stream, IL 60188 US
karenperlman@tyndalehousefdn.org

(630) 784-5278



Kate Sedgwick

PCP Administrative Associate
admin@pcpcommunity.com

(610) 635-9374



PCP Steering Committee:

Lonni Jackson	Nadine McIntosh
Mani Khy	Cary Paine
Fritz Kling	Terese Stevenson
Steve Mayer	Julie Sulc

Speakers at 2019 PCP Conference:

Scott Todd

Vice President of Engagement at One Child Matters
15475 Gleneagle Dr.
Colorado Springs, CO 80921 US
stodd@onechildmatters.org

(719) 482-0100



Dean Karlan

Professor of Economics and Finance at the Kellogg School of Management
Co-Director of the Global Poverty Research Lab at Buffett Institute
Northwestern University
2211 Campus Drive #4441
Evanston, IL 60208 US
karlan@northwestern.edu

(847) 491-8706



Meridith Polin

Senior Officer at The Pew Charitable Trusts
2005 Market Street, Suite 2800
Philadelphia, PA 19103 US
mpolin@pewtrusts.org

(215) 575-4708

